



**Dialogic[®] Brooktrout[®] SR140 Fax Software with
ShoreTel Release 12.1 Gateway
Installation and Configuration Integration Note**

IMPORTANT NOTE

This document is not to be shared with or disseminated to other third parties, in whole or in part, without prior written permission from Dialogic. To seek such permission, please contact your Dialogic Sales Representative.

Copyright and Legal Notice

Copyright © 2012 Dialogic Inc. All Rights Reserved. You may not reproduce this document in whole or in part without permission in writing from Dialogic Inc. at the address provided below.

All contents of this document are furnished for informational use only and are subject to change without notice and do not represent a commitment on the part of Dialogic Inc. and its affiliates or subsidiaries (“Dialogic”). Reasonable effort is made to ensure the accuracy of the information contained in the document. However, Dialogic does not warrant the accuracy of this information and cannot accept responsibility for errors, inaccuracies or omissions that may be contained in this document.

INFORMATION IN THIS DOCUMENT IS PROVIDED IN CONNECTION WITH DIALOGIC® PRODUCTS. NO LICENSE, EXPRESS OR IMPLIED, BY ESTOPPEL OR OTHERWISE, TO ANY INTELLECTUAL PROPERTY RIGHTS IS GRANTED BY THIS DOCUMENT. EXCEPT AS PROVIDED IN A SIGNED AGREEMENT BETWEEN YOU AND DIALOGIC, DIALOGIC ASSUMES NO LIABILITY WHATSOEVER, AND DIALOGIC DISCLAIMS ANY EXPRESS OR IMPLIED WARRANTY, RELATING TO SALE AND/OR USE OF DIALOGIC PRODUCTS INCLUDING LIABILITY OR WARRANTIES RELATING TO FITNESS FOR A PARTICULAR PURPOSE, MERCHANTABILITY, OR INFRINGEMENT OF ANY INTELLECTUAL PROPERTY RIGHT OF A THIRD PARTY.

Dialogic products are not intended for use in certain safety-affecting situations. Please see <http://www.dialogic.com/company/terms-of-use.aspx> for more details.

Due to differing national regulations and approval requirements, certain Dialogic products may be suitable for use only in specific countries, and thus may not function properly in other countries. You are responsible for ensuring that your use of such products occurs only in the countries where such use is suitable. For information on specific products, contact Dialogic Inc. at the address indicated below or on the web at www.dialogic.com.

It is possible that the use or implementation of any one of the concepts, applications, or ideas described in this document, in marketing collateral produced by or on web pages maintained by Dialogic may infringe one or more patents or other intellectual property rights owned by third parties. Dialogic does not provide any intellectual property licenses with the sale of Dialogic products other than a license to use such product in accordance with intellectual property owned or validly licensed by Dialogic and no such licenses are provided except pursuant to a signed agreement with Dialogic. More detailed information about such intellectual property is available from Dialogic’s legal department at 9800 Cavendish Blvd., 5th Floor, Montreal, Quebec, Canada H4M 2V9. **Dialogic encourages all users of its products to procure all necessary intellectual property licenses required to implement any concepts or applications and does not condone or encourage any intellectual property infringement and disclaims any responsibility related thereto. These intellectual property licenses may differ from country to country and it is the responsibility of those who develop the concepts or applications to be aware of and comply with different national license requirements.**

Dialogic, Dialogic Pro, Dialogic Blue, Veraz, Brooktrout, Diva, Diva ISDN, Making Innovation Thrive, Video is the New Voice, VisionVideo, Diastar, Cantata, TruFax, SwitchKit, SnowShore, Eicon, Eiconcard, NMS Communications, NMS (stylized), SIPcontrol, Exnet, EXS, Vision, PowerMedia, PacketMedia, BorderNet, inCloud9, I-Gate, ControlSwitch, NaturalAccess, NaturalCallControl, NaturalConference, NaturalFax and Shiva, among others as well as related logos, are either registered trademarks or trademarks of Dialogic Inc. and its affiliates or subsidiaries. Dialogic’s trademarks may be used publicly only with permission from Dialogic. Such permission may only be granted by Dialogic’s legal department at 9800 Cavendish Blvd., 5th Floor, Montreal, Quebec, Canada H4M 2V9 . Any authorized use of Dialogic’s trademarks will be subject to full respect of the trademark guidelines published by Dialogic from time to time and any use of Dialogic’s trademarks requires proper acknowledgement.

The names of actual companies and products mentioned herein are the trademarks of their respective owners.

Any use case(s) shown and/or described herein represent one or more examples of the various ways, scenarios or environments in which Dialogic products can be used. Such use case(s) are non-limiting and do not represent recommendations of Dialogic as to whether or how to use Dialogic products.

1. Scope

This document is intended as a general guide for configuring a basic installation of the **ShoreTel Release 12.1 Gateway** for use with Dialogic® Brooktrout® SR140 Fax over IP (FoIP) software platform. The interoperability includes SIP call control and T.38/T.30 media.

This document is not intended to be comprehensive and thus does not replace the manufacturer's detailed configuration documentation. Users of this document should already have a general knowledge of how to install and configure the **ShoreTel Gateway**.

The sample configuration shown and/or referred in the subsequent sections was used for lab validation testing by Dialogic. Therefore, it is quite possible that the sample configuration will not match an exact configuration or versions that would be present in a deployed environment. However, the sample configuration does provide a possible starting point to work with the equipment vendor for configuring your device. Please consult the appropriate manufacturer's documentation for details on setting up your specific end user configuration.

For ease of reference, the Dialogic® Brooktrout® SR140 Fax Software and Dialogic® Brooktrout® TR1034 Fax Boards will sometimes be denoted herein, respectively, as SR140 and TR1034. All references to the SDK herein refer to the Dialogic® Brooktrout® Fax Products SDK.

2. Configuration Details

The following systems were used for the sample configuration described in the document.

2.1 ShoreTel Gateway

Vendor	ShoreTel
Model	ShoreGear 220T1A Switch
Software Version	Release 12.1 build 17.22.5240.0
IP Device	Dialogic® Brooktrout® SR140 Fax Software
Protocol to SR140 Fax Software	SIP
PSTN Device	Dialogic® Brooktrout® TR1034
Protocol to PSTN Device	T1
Additional Notes	<i>The maximum T.38 protocol supported by the ShoreTel Gateway is V.29 (9,600 bits/sec). V.17 (14,400 bits/sec) is not supported.</i>

2.2 Dialogic® Brooktrout® SR140 Fax Software

Vendor	Dialogic
Model	Dialogic® Brooktrout® SR140 Fax Software
Software Version	Tested with SDK 6.4.3
Protocol to Gateway or Call Manager	SIP
callctrl.cfg file	All defaults except: <ul style="list-style-type: none"> • SIP session refresh was set to 1800 • Image and control redundancies were set to 0

2.3 Dialogic® Brooktrout® TR1034 Fax Server

Vendor	Dialogic
Model	Dialogic® Brooktrout® TR1034+E24H-T1-1N
Software Version	Tested with SDK 6.4.3
Protocol to Gateway or Call Manager	T1 ISDN
callctrl.cfg file	All defaults

2.4 Network System Configuration

The diagram below details the sample configuration used in connection with this document.

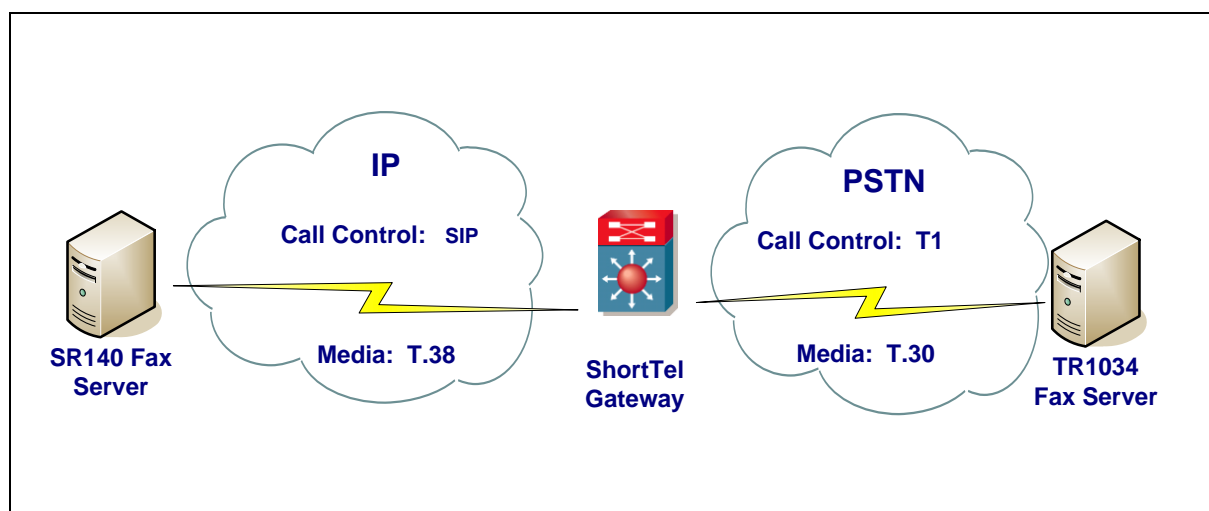


Diagram Notes:

- SR140 Fax Server = Fax Server including Dialogic® Brooktrout® SR140 Fax Software and third party fax application.

2.5 Network Addresses

The following table lists the IP addresses and their descriptions used in subsequent sections.

Device #	Device Make, Model, and Description	Device IP Address
1	ShoreTel GW	10.242.202.19
2	SR140 Fax Server	10.242.202.14

3. Prerequisites

- Testing was performed with Dialogic Brooktrout SR140 running SDK 6.4.3; however, no changes for ShoreTel Interop have been applied since SDK 6.2.3.
- ShoreTel Controlled Release for Release 12.1 build 17.22.5240.0 or later.

4. Summary of Limitations

- Enabling redundancy for T.38 causes data errors when using the ShoreTel Gateway. For interoperability, the SR140 requires redundancy for both image and control to be set to 0. In the SR140 callctrl.cfg file, set t38_UDPTL_redundancy_depth_control=0 and t38_UDPTL_redundancy_depth_image=0
- The ShoreTel Gateway sends a SIP session refresh if it is enabled on the ShoreTel Gateway even if the SR140 is configured not to use SIP session refresh. This will cause the SR140 to drop the call if a SIP refresh is received. For interoperability, the SR140 SIP session refresh must be set to 1800. To do this set sip_session_timer_session_expires=1800 in the SR140 callctrl.cfg file.
- The maximum T.38 protocol supported by the ShoreTel Gateway is V.29 (9,600 bits/sec). V.17 (14,400 bits/sec) is not supported.

5. ShoreTel Gateway Setup Notes

Configuring the ShoreTel equipment was performed using the ShoreTel ShoreWare Director. This web interface allows the user to administrate the ShoreTel equipment using a web browser.

Using the web browser, the host name for the SR140 was added as a SIP Server. The protocol for the SR140 SIP Server must be set to UDP via the Protocol pull-down.

SIP Server Info - Windows Internet Explorer

Name:

Site:

Protocol:

Host (Name / Address / Domain):

Override Default Port:

Allow External Voice Mail for Extension-Only User

Allow Fax Redirect to This Server

Extension:

Assigned User Group:

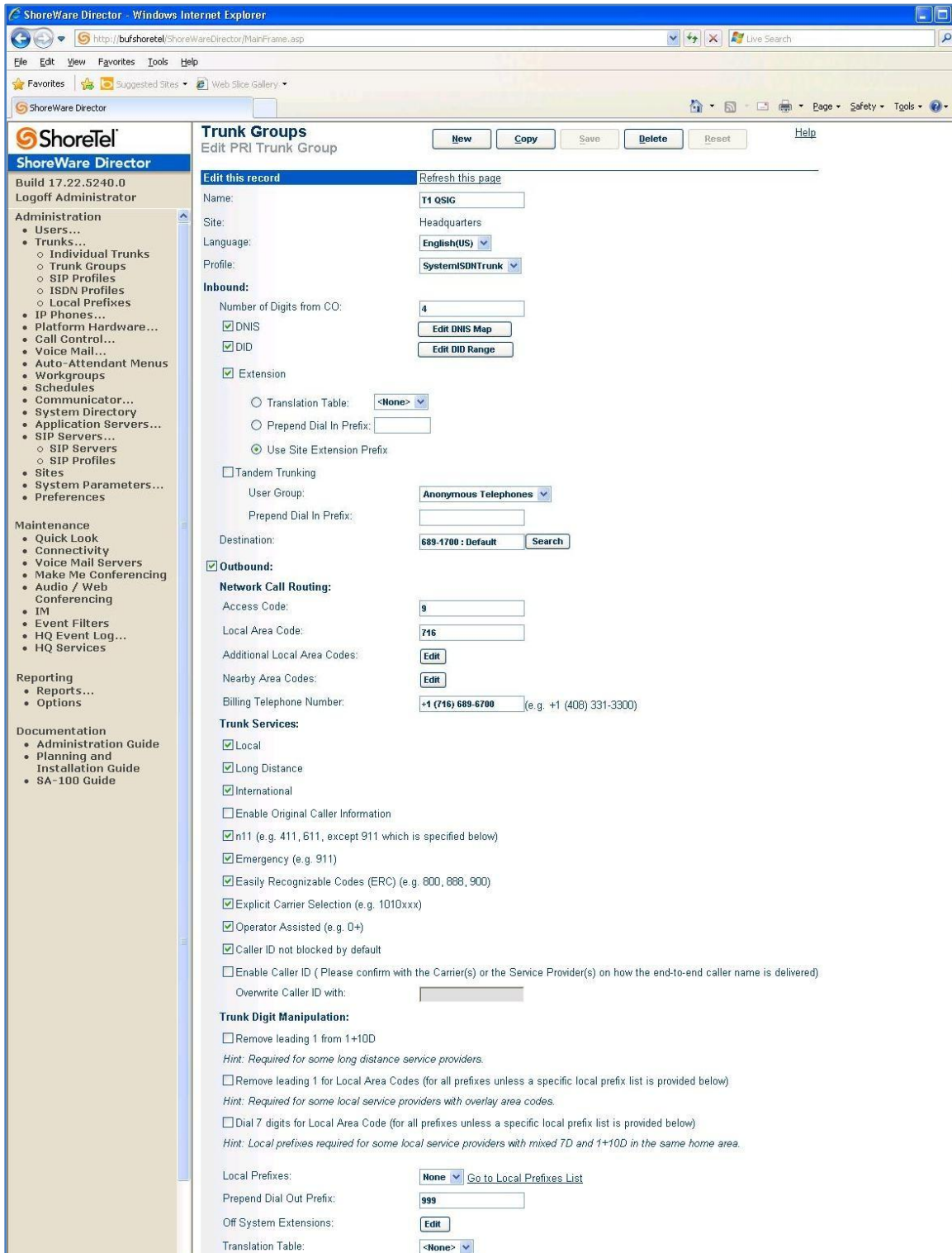
SIP Profile:

Digest Authentication:

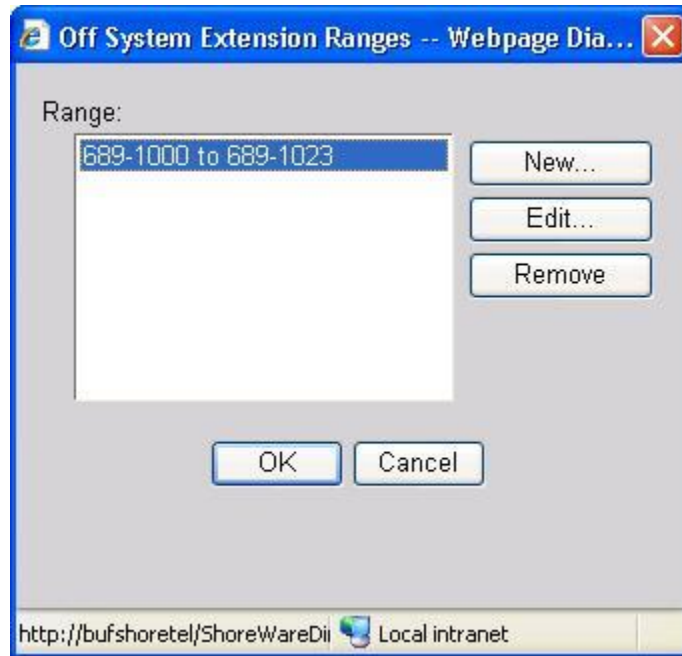
User ID:

Password:

The following screenshot may be used as a reference and includes the settings used in the sample test configuration for the PRI Trunk Group between the ShoreTel Gateway and the TR1034 Fax Server.



To the configure ShoreTel to route calls from the SR140 Fax Server to the TR1034 Fax Server via the T1 trunk, an “Off System Extension Range” was created to direct calls to the T1 trunk that match the range provided.



To the configure ShoreTel to route calls from the TR1034 Fax Server to the SR140 Fax Server, a DNIS Digit Map was created to direct calls from the SIP Trunk that match the 'Dialed Number' to the SR140 location.

The screenshot shows the ShoreWare Director web interface in a Windows Internet Explorer browser. The page title is "DNIS Digit Map" and the sub-header is "T1 QSIG". There are "Save" and "Reset" buttons at the top right. Below the header, there are links for "Edit this record" and "Refresh this page".

Received Digits	Dialed Number	Destination	
9000	9000	SR140	Delete
9123	9123	Dave OCS	Delete

Below the table, there is an "Add this record" section with two input fields for "Received Digits" and "Dialed Number", a radio button for "Extension" (selected) and "Off System", a "Search" button, and a dropdown menu for "689-1000 to 689-1023".

© 1998-2011 ShoreTel, Inc. All rights reserved.

The left sidebar contains a navigation menu with categories: Administration (Users, Trunks, Individual Trunks, Trunk Groups, SIP Profiles, ISDN Profiles, Local Prefixes, IP Phones, Platform Hardware, Call Control, Voice Mail, Auto-Attendant Menus, Workgroups, Schedules, Communicator, System Directory, Application Servers, SIP Servers, Sites, System Parameters, Preferences), Maintenance (Quick Look, Connectivity, Voice Mail Servers, Make Me Conferencing, Audio / Web Conferencing, IM, Event Filters, HQ Event Log, HQ Services), Reporting (Reports, Options), and Documentation (Administration Guide, Planning and Installation Guide, SA-100 Guide, Telephone User Interface, Telephone Quick Install Guides, Server).

The browser address bar shows: http://bufshoretel/ShoreWareDirector/DID_Range.asp?ID=5#

6. Dialogic® Brooktrout® SR140 Fax Software Setup Notes

The Installation and Configuration Guides used to set up the SR140 is available from the site below:

<http://www.dialogic.com/manuals/brooktrout/default.htm>

The SR140 callctrl.cfg file used in the sample test configuration is shown below for reference. The changes from the default settings are highlighted in yellow.

```
l3l4_trace=verbose
l4l3_trace=verbose
api_trace=verbose
internal_trace=verbose
host_module_trace=verbose
ip_stack_trace=warning
# Most of the time a path should be used for this file name.
trace_file=test_0004_ecc.log
max_trace_files=1
max_trace_file_size=10
[host_module.1]
module_library=brktsip.dll
enabled=true
[host_module.1/t38parameters]
t38_fax_rate_management=transferredTCF
fax_transport_protocol=t38_only
t38_fax_udp_ec=t38UDPRedundancy
rtp_ced_enable=true
t38_max_bit_rate=14400
t38_fax_version=0
media_passthrough_timeout_inbound=1000
media_passthrough_timeout_outbound=4000
media_renegotiate_delay_inbound=1000
media_renegotiate_delay_outbound=-1
t38_fax_fill_bit_removal=false
t38_fax_transcoding_jbig=false
t38_fax_transcoding_mmr=false
t38_t30_fastnotify=false
t38_type_of_service=0
t38_UDPTL_redundancy_depth_control=0
t38_UDPTL_redundancy_depth_image=0
[host_module.1/rtp]
rtp_frame_duration=20
rtp_jitter_buffer_depth=100
rtp_codec=pcmu pcma
rtp_silence_control=inband
t38_offer_as_ced=true
rtp_type_of_service=0
rtp_voice_frame_replacement=0
[host_module.1/parameters]
sip_max_sessions=256
sip_default_gateway=
sip_proxy_server1=
sip_proxy_server2=
sip_proxy_server3=
sip_proxy_server4=
sip_registration_server1=
sip_registration_server1_aor=
sip_registration_server1_username=
sip_registration_server1_password=
sip_registration_server1_expires=3600
sip_registration_server2=
sip_registration_server2_aor=
sip_registration_server2_username=
sip_registration_server2_password=
```

```
sip_registration_server2_expires=3600
sip_registration_server3=
sip_registration_server3_aor=
sip_registration_server3_username=
sip_registration_server3_password=
sip_registration_server3_expires=3600
sip_registration_server4=
sip_registration_server4_aor=
sip_registration_server4_username=
sip_registration_server4_password=
sip_registration_server4_expires=3600
sip_registration_interval=60
sip_registration_interval_delta=5
sip_Max-Forwards=70
sip_From=Anonymous <sip:no_from_info@anonymous.invalid>
sip_Contact=10.242.202.14:5060
sip_ContactV6=
sip_username=
sip_session_name=no_session_name
sip_session_description=
sip_description_URI=
sip_email=
sip_phone=
sip_Route=
sip_session_timer_session_expires=1800
sip_session_timer_minse=-1
sip_session_timer_refresh_method=0
sip_ip_preference=ipv4_only
sip_ip_interface=
sip_ip_interfaceV6=
sip_ip_interface_port=5060
sip_ip_interface_portV6=5060
sip_redirect_as_calling_party=0
sip_T1_timeout=500
sip_max_invite_retransmissions=7
sip_redirect_as_called_party=0
sip_user_agent=Brktsip/6.4.3B7 (Dialogic)
sip_RFC3325_Identity=0
[module.41]
model=SR140
virtual=1
exists=1
vb_firm=C:\interop kit SDK643 v1.4\fdtool-6.4.3\bin\bostrvb.dll
channels=120
[module.41/ethernet.1]
ip_preference=ipv4_only
ip_interface={7D57B541-A7F4-4674-9B2B-29AAE2E3A9A2}:0
ip_interfaceV6={7D57B541-A7F4-4674-9B2B-29AAE2E3A9A2}:0
ip_address=0.0.0.0
ip_addressV6=
media_port_min=56000
media_port_max=56999
[module.41/host_cc.1]
host_module=1
number_of_channels=120
```

7. Diallogic® Brooktrout® TR1034 Setup Notes

For the sample test configuration, the TR1034 was configured using the default values, consult the *Diallogic® Brooktrout® Fax Products Installation and Configuration Guide* for details.

<http://www.diallogic.com/manuals/brooktrout/default.htm>

8. Frequently Asked Questions

- *"I'm configured as near as possible to this the sample configuration described in this document, but calls are still not successful; what is my next step?"*
 - ➔ Provide this document to your gateway support.
 - ➔ Ensure T.38 is enabled on the gateway.
 - ➔ Confirm that basic network access is possible by pinging the gateway.

- *"How do I obtain Wireshark traces?"*
 - ➔ The traces can be viewed using the Wireshark network analyzer program, which can be freely downloaded from <http://www.wireshark.org>.
 - ➔ To view the call flow in Wireshark, open the desired network trace file and select "Statistics->VoIP Calls" from the drop down menu. Then highlight the call and click on the "Graph" button.