



**Dialogic<sup>®</sup> Brooktrout<sup>®</sup> SR140 Fax Software with  
AudioCodes Mediant 1000 Gateway  
Installation and Configuration Integration Note**

**IMPORTANT NOTE**

This document is not to be shared with or disseminated to other third parties, in whole or in part, without prior written permission from Dialogic. To seek such permission, please contact your Dialogic Sales Representative.

## Copyright and Legal Notice

Copyright © 2011 Dialogic Inc. All Rights Reserved. You may not reproduce this document in whole or in part without permission in writing from Dialogic Inc. at the address provided below.

All contents of this document are furnished for informational use only and are subject to change without notice and do not represent a commitment on the part of Dialogic Inc. and its affiliates or subsidiaries ("Dialogic"). Reasonable effort is made to ensure the accuracy of the information contained in the document. However, Dialogic does not warrant the accuracy of this information and cannot accept responsibility for errors, inaccuracies or omissions that may be contained in this document. INFORMATION IN THIS DOCUMENT IS PROVIDED IN CONNECTION WITH DIALOGIC® PRODUCTS. NO LICENSE, EXPRESS OR IMPLIED, BY ESTOPPEL OR OTHERWISE, TO ANY INTELLECTUAL PROPERTY RIGHTS IS GRANTED BY THIS DOCUMENT. EXCEPT AS PROVIDED IN A SIGNED AGREEMENT BETWEEN YOU AND DIALOGIC, DIALOGIC ASSUMES NO LIABILITY WHATSOEVER, AND DIALOGIC DISCLAIMS ANY EXPRESS OR IMPLIED WARRANTY, RELATING TO SALE AND/OR USE OF DIALOGIC PRODUCTS INCLUDING LIABILITY OR WARRANTIES RELATING TO FITNESS FOR A PARTICULAR PURPOSE, MERCHANTABILITY, OR INFRINGEMENT OF ANY INTELLECTUAL PROPERTY RIGHT OF A THIRD PARTY.

Dialogic products are not intended for use in medical, life saving, life sustaining, critical control or safety systems, or in nuclear facility applications.

Due to differing national regulations and approval requirements, certain Dialogic products may be suitable for use only in specific countries, and thus may not function properly in other countries. You are responsible for ensuring that your use of such products occurs only in the countries where such use is suitable. For information on specific products, contact Dialogic Inc. at the address indicated below or on the web at [www.dialogic.com](http://www.dialogic.com).

It is possible that the use or implementation of any one of the concepts, applications, or ideas described in this document, in marketing collateral produced by or on web pages maintained by Dialogic may infringe one or more patents or other intellectual property rights owned by third parties. Dialogic does not provide any intellectual property licenses with the sale of Dialogic products other than a license to use such product in accordance with intellectual property owned or validly licensed by Dialogic and no such licenses are provided except pursuant to a signed agreement with Dialogic. More detailed information about such intellectual property is available from Dialogic's legal department at 926 Rock Avenue, San Jose, California 95131 USA. **Dialogic encourages all users of its products to procure all necessary intellectual property licenses required to implement any concepts or applications and does not condone or encourage any intellectual property infringement and disclaims any responsibility related thereto. These intellectual property licenses may differ from country to country and it is the responsibility of those who develop the concepts or applications to be aware of and comply with different national license requirements.**

Dialogic, Dialogic Pro, Dialogic Blue, Veraz, Brooktrout, Diva, Diva ISDN, Making Innovation Thrive, Video is the New Voice, Diastar, Cantata, TruFax, SwitchKit, SnowShore, Eicon, Eicon Networks, NMS Communications, NMS (stylized), Eiconcard, SIPcontrol, TrustedVideo, Exnet, EXS, Connecting to Growth, Fusion, Vision, PowerMedia, PacketMedia, BorderNet, inCloud9, I-Gate, Hi-Gate, NaturalAccess, NaturalCallControl, NaturalConference, NaturalFax and Shiva, among others as well as related logos, are either registered trademarks or trademarks of Dialogic Inc. and its affiliates or subsidiaries. Dialogic's trademarks may be used publicly only with permission from Dialogic. Such permission may only be granted by Dialogic's legal department at 926 Rock Avenue, San Jose, California 95131 USA. Any authorized use of Dialogic's trademarks will be subject to full respect of the trademark guidelines published by Dialogic from time to time and any use of Dialogic's trademarks requires proper acknowledgement.

The names of actual companies and products mentioned herein are the trademarks of their respective owners.

Any use case(s) shown and/or described herein represent one or more examples of the various ways, scenarios or environments in which Dialogic products can be used. Such use case(s) are non-limiting and do not represent recommendations of Dialogic as to whether or how to use Dialogic products.

## 1. Scope

This document is intended as a general guide for configuring a basic installation of the **AudioCodes Mediant 1000 Gateway** for use with the **Dialogic® Brooktrout® SR140 Fax over IP (FoIP) software platform**. For the purpose of this integration note, the system was configured for general use and not for automatic (that is, DID) fax routing. The interoperability includes *SIP* call control and T.38/T.30 media.

This document is not intended to be comprehensive and thus does not replace the manufacturer's detailed configuration documentation. Users of this document should already have a general knowledge of how to install and configure **AudioCodes Mediant 1000** with the **Dialogic® Brooktrout® SR140**.

The sample configuration shown and/or referred in the subsequent sections was used for lab validation testing by Dialogic. Therefore, it is possible and even likely that the example configuration will not match the exact configuration and versions that would be present in a deployed environment. However, the sample configuration does provide a possible starting point to work with the equipment vendor for configuring your device. Please consult the appropriate manufacturer's documentation for details on setting up your specific end user configuration.

For ease of reference, the Dialogic® Brooktrout® SR140 Fax Software and Dialogic® Brooktrout® TR1034 Fax Boards will sometimes be denoted herein, respectively, as SR140 and TR1034. All references to the SDK herein refer to the Dialogic® Brooktrout® Fax Products SDK. The AudioCodes Mediant 1000 will sometimes be denoted herein as Mediant 1000, or some other form thereof.

## 2. Configuration Details

The following systems were used for the sample configuration described in the document.

### 2.1 AudioCodes Mediant 1000 Gateway

Vendor	<b>AudioCodes</b>
Model	<b>Mediant 1000 Gateway</b>
Software Version	<b>5.60A.027.002</b>
Protocol to PSTN Device	<b>Analog</b>
IP Device	<b>Dialogic® Brooktrout® SR140 Fax Software</b>
Protocol to IP Device	<b>SIP</b>
callctrl.cfg file	<b>All defaults</b>

### 2.2 Dialogic® Brooktrout® SR140 Fax Software

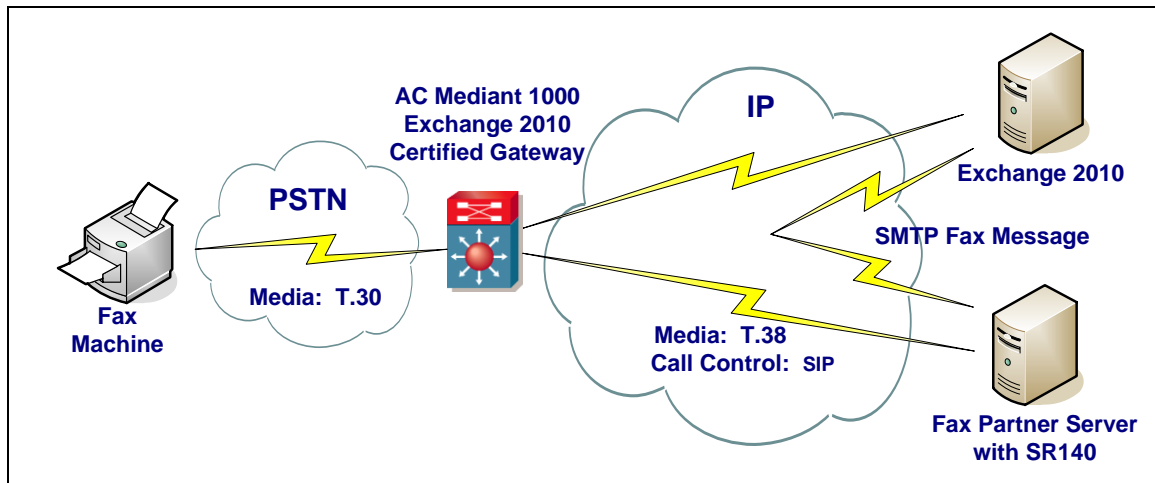
Vendor	<b>Dialogic</b>
Model	<b>Dialogic® Brooktrout® SR140 Fax Software</b>
Software Version	<b>SDK 6.2.1</b>
Protocol to Gateway	<b>SIP</b>
callctrl.cfg file	<b>All defaults</b>

## 2.3 Microsoft® Exchange Server 2010

Vendor	<b>Microsoft®</b>
Model(s)	<b>Exchange 2010</b>
Software Version(s)	<b>Version: 14.00.0639.021</b>
IP Device	<b>Dialogic® Brooktrout® SR140</b>
Gateway	<b>AudioCodes Mediant 1000</b>

## 2.4 Network System Configuration

The diagram below details the sample configuration used in connection with this document.



### Diagram Notes:

- Fax Partner Server = Fax Server including Dialogic® Brooktrout® SR140 Fax Software and fax test application

## 3. Prerequisites

None.

## 4. Summary of Limitations

The AudioCodes Mediant 1000 Gateway does not support CNG via RFC2833. As a result, Exchange 2010 must be configured to detect inband fax tones.

To configure the Exchange 2010 server to enable this support, the user must modify the **MSExchangeUM** config file that is located in the **V14\Bin directory** of their Exchange 2010 installation.

The key for **EnableInbandFaxDetection** shall be modified to be **TRUE**.

```
<!-- Specifies whether inband fax detection is enabled. If false, UM relies on the  
IP Gateways to perform detection. -->
```

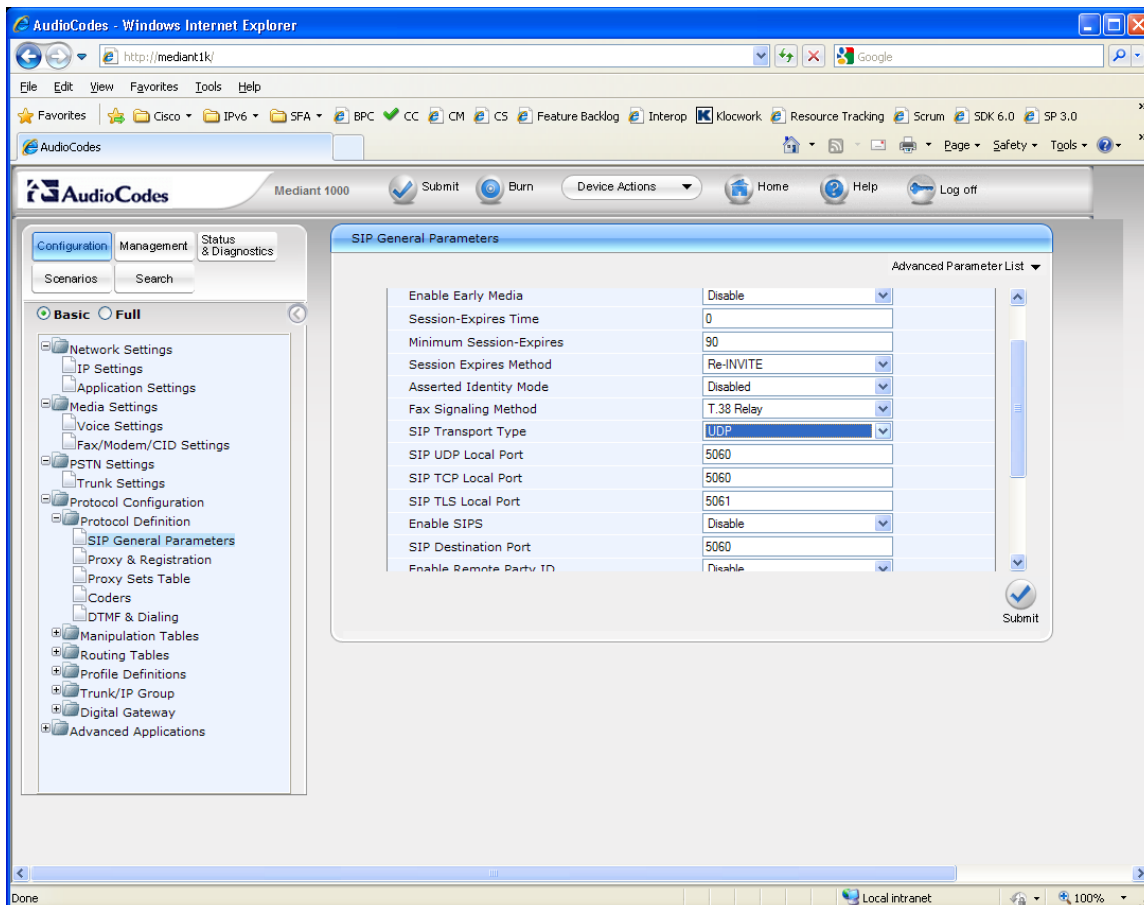
```
<add key="EnableInbandFaxDetection" value="TRUE"/>
```

After this key has been modified, the Exchange 2010 server must be restarted for the new settings to go into effect.

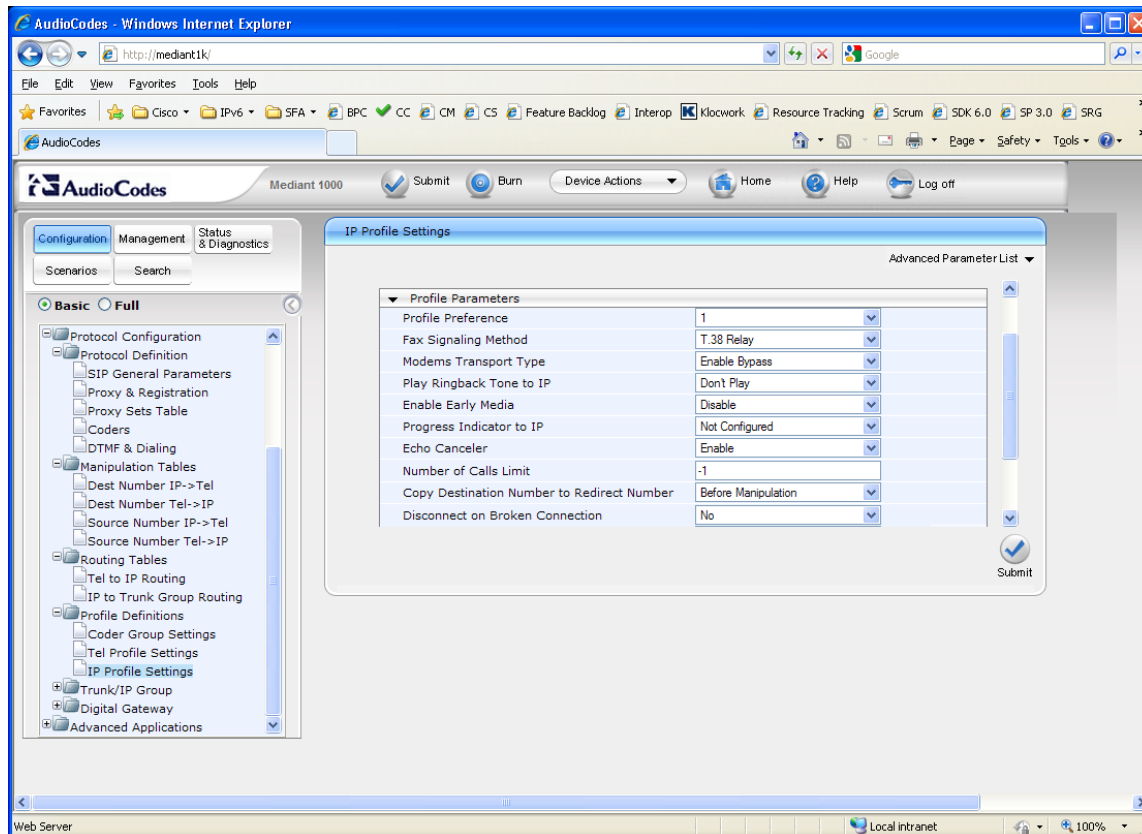
## 5. AudioCodes Mediant 1000 Gateway Setup Notes

The *Configuration Guide Enabling Fax for Microsoft Exchange Server 2007* provided by AudioCodes was used to configure the Mediant 1000 for the sample test configuration.

The Mediant 1000 gateway must be configured with the SR140 fax server to use UDP instead of TCP. The option for the SIP Transport Type is located under the SIP General Parameters as shown below.



In the IP Profile Settings, the setting of Copy Destination Number to the Redirect number was updated from disable to Before Manipulation.



## 6. Dialogic® Brooktrout® SR140 Fax Software Setup Notes

For the sample test configuration, the default callctrl.cfg included with SDK 6.2.1 was used.

The Installation and Configuration Guides for the SR140 are available from the following site:

<http://www.dialogic.com/manuals/brooktrout/default.htm>

## 7. Microsoft® Exchange Server 2010 UM Setup Notes

The Installation and Configuration Guide for Microsoft Exchange 2010 was used to configure the Exchange server, document number 64-0600-20.

## 8. Frequently Asked Questions

- *"I'm configured as near as possible to this the sample configuration described in this document, but calls are still not successful; what is my next step?"*
  - ➔ Provide this document to your gateway support.
  - ➔ Ensure T.38 is enabled on the gateway.
  - ➔ Confirm that basic network access is possible by pinging the gateway.
  
- *"How do I obtain Wireshark traces?"*
  - ➔ The traces can be viewed using the Wireshark network analyzer program, which can be freely downloaded from <http://www.wireshark.org>.
  - ➔ To view the call flow in Wireshark, open the desired network trace file and select "Statistics->VoIP Calls" from the drop down menu. Then highlight the call and click on the "Graph" button.